



# LIMESTONE MEDICAL/BUSINESS PARK—Beautiful Vistas!

Welcome to the medical and business park overlooking Limestone Parkway. The Limestone Business Park offers graded sites, street lights, sidewalks, and underground utilities, along with protective covenants (brick, stone, and stucco construction, etc.) to ensure long-lasting appreciation. Five lots have already been sold, and brand new buildings are housing thriving doctors' practices. The remaining five lots have been reduced by \$100,000!

You'd be hard pressed to find such prestigious lots with all these amenities, plus great views, anywhere else in Gainesville! Lots can be combined for larger buildings. Bring your own builder.

<b><u>Lot#</u></b>	<b><u>Proposed Bldg. Size</u></b>	<b><u>Acreage</u></b>	<b><u>Price</u></b>
Lot 1	Sold to Gainesville Gastroenterology Group		
Lot 2	Sold to Gainesville Gastroenterology Group		
Lot 3	Sold to Gainesville Gastroenterology Group		
Lot 4	4,500 s.f.	1.60	Reduced to \$270,000
Lot 5	4,800 s.f.	1.39	Reduced to \$270,000
Lot 6	5,000 s.f.	1.40	Reduced to \$300,000
Lot 7	4,500 s.f.	.90	Reduced to \$270,000
Lot 8	Sold to Lanier Interventional Pain Center		
Lot 9	Sold to Lanier Interventional Pain Center		
Lot 10	4,000 s.f.	.65	Reduced to \$320,000

Please contact me directly for larger plats, aerials, protective covenants and additional information.

**Brent Hoffman—Direct: 770-533-6721**

**Email: [Brent@BrentHoffman.com](mailto:Brent@BrentHoffman.com)**

**Property website: [www.BrentHoffman.com](http://www.BrentHoffman.com)**

Prudential Georgia Realty 770-536-3001



**LOT 4**

**Lot 5**

**LOT 6**

**LOT 7**

**LOT 1**

# These would be your neighbors!

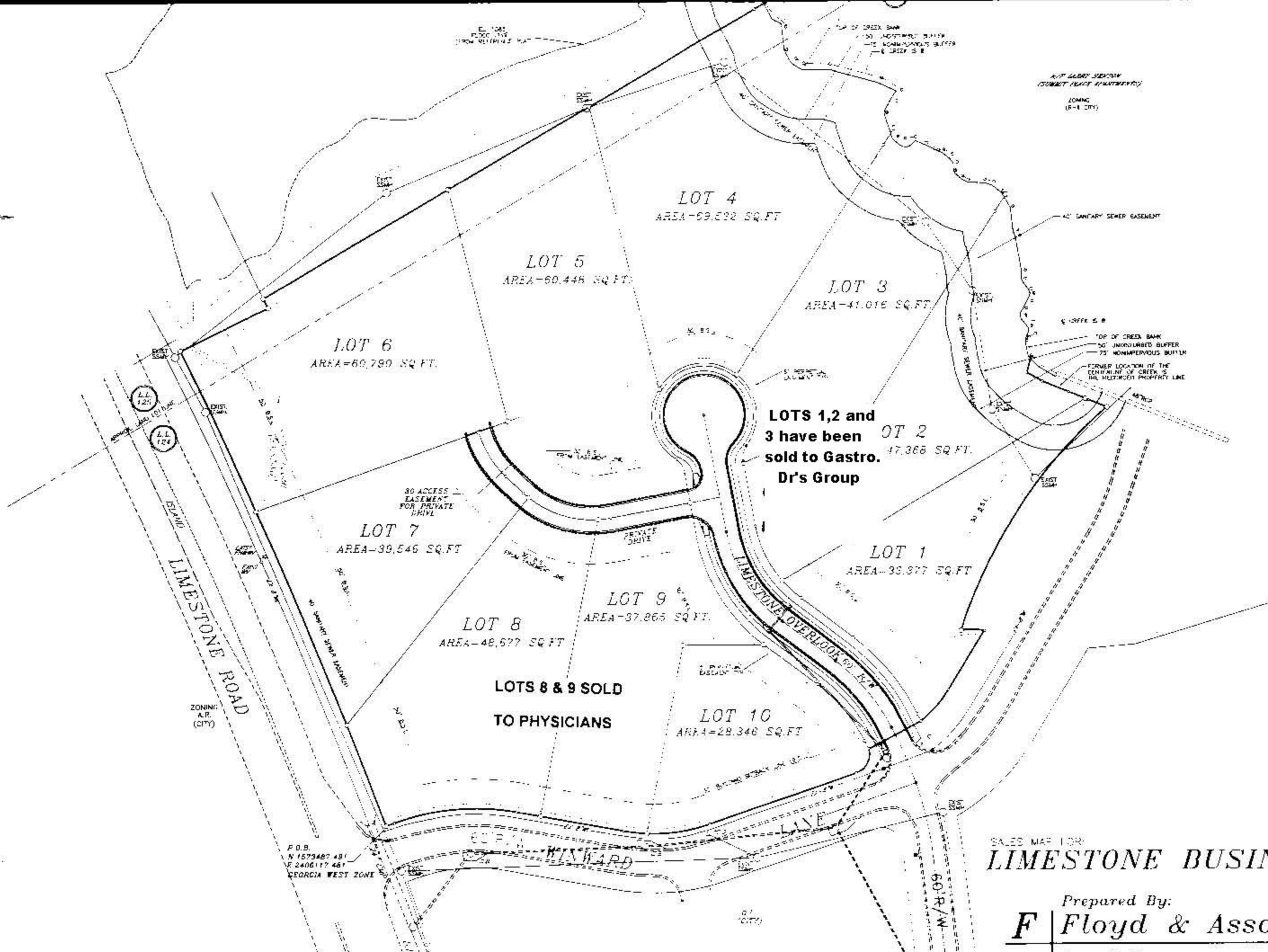
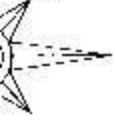


The [Gastroenterology Associates of Gainesville, P.C.](#), bought lots 1, 2 and 3.



The brand-new building that houses the [Lanier Interventional Pain Center](#) sits on Lots 8 and 9.

GRID NORTH  
GEORGIA WEST ZONE



LOT 4  
AREA-69,522 SQ. FT.

LOT 5  
AREA-60,446 SQ. FT.

LOT 3  
AREA-41,015 SQ. FT.

LOT 6  
AREA-60,780 SQ. FT.

LOTS 1, 2 and 3 have been sold to Gastro Dr's Group

LOT 2  
AREA-17,368 SQ. FT.

LOT 7  
AREA-39,546 SQ. FT.

LOT 1  
AREA-38,977 SQ. FT.

LOT 8  
AREA-48,577 SQ. FT.

LOT 9  
AREA-37,865 SQ. FT.

LOTS 8 & 9 SOLD TO PHYSICIANS

LOT 10  
AREA-28,346 SQ. FT.

LIMESTONE ROAD

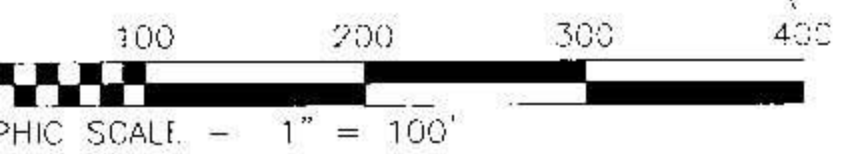
LIMESTONE OVERLOOK DRIVE

60' R/W  
WINWARD

SALES MAP FOR  
**LIMESTONE BUSINESS PARK**

Prepared By:  
**F** Floyd & Associates, Inc.

Land Surveyors  
P.O. Box 1119  
Oakwood, GA. 30566  
Phone (770) 531-0900



GRAPHIC SCALE - 1" = 100'

