



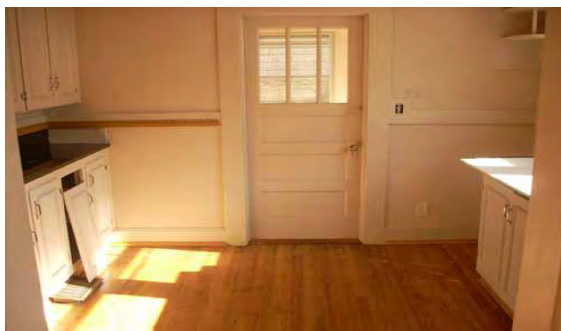
Prudential Georgia Realty

BrentHoffman.com

"When You Want It Sold"

Commercial Real Estate Services

**JUST
REDUCED**



FOR SALE

1770 Thompson Bridge Rd – Gainesville

PRICE REDUCED TO SELL QUICKLY!

\$259,500 with 30,000 cars/day

ZONED RESIDENTIAL/OFFICE

Old world charm with beautiful stone exterior on .5 acre. This large office building simply requires a look inside! Almost completely renovated. Beautiful hardwood floors, ceiling fans, granite counter tops, 4 – 6 offices, main floor plus basement for storage or possible lease-out, front and rear parking. You will love the interior!



For more information call 770-533-6721 or email at Brent@BrentHoffman.com

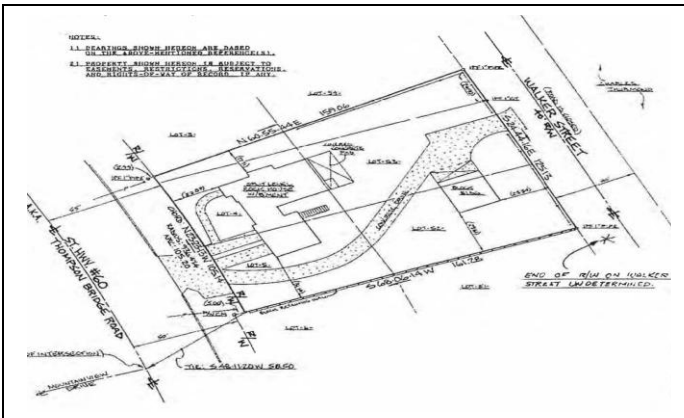
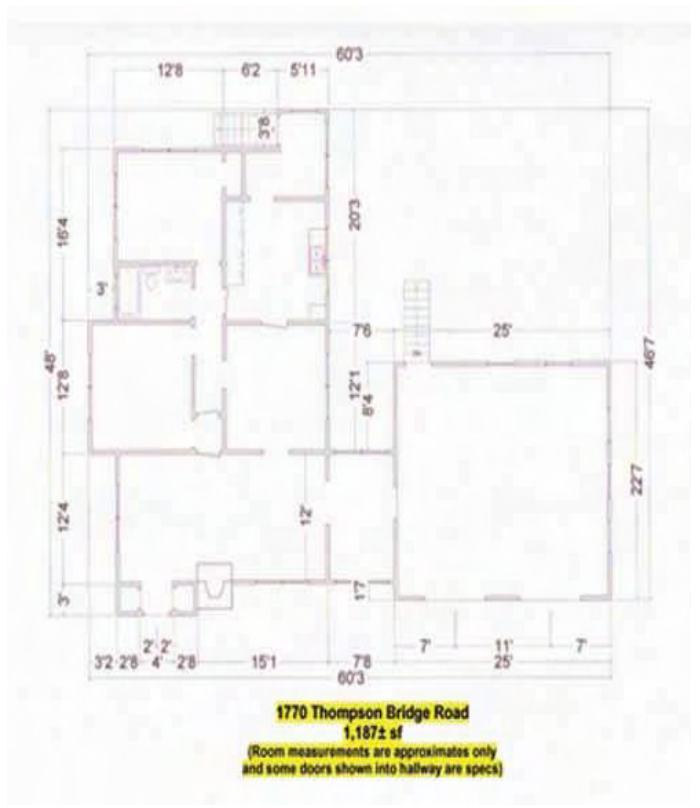
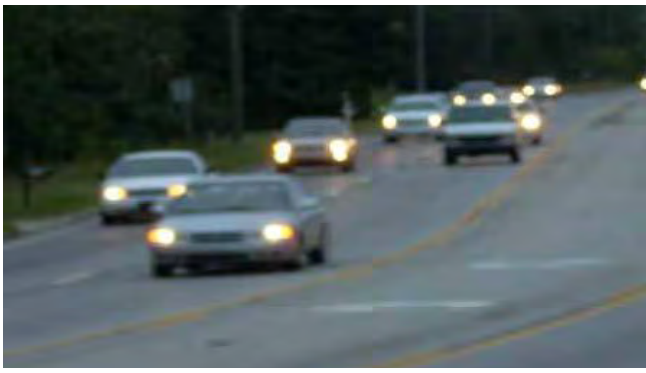
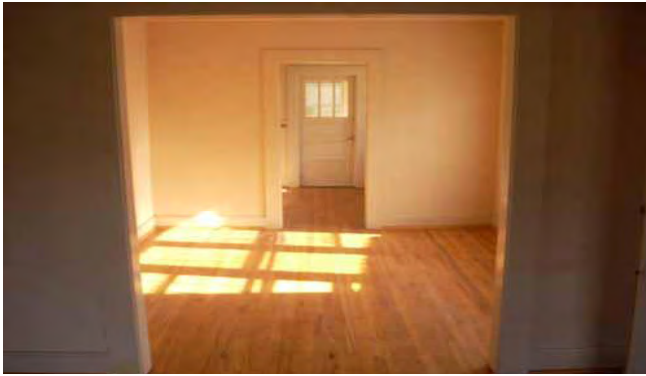
More property information at www.BrentHoffman.com

Prudential Georgia Realty – 770-536-3007

1770 Thompson Bridge Road – Gainesville, GA



- 4 - 6 offices
- 30,000 cars per day
- Tremendous visibility
- Room to expand
- Zoned and ready to go



BRENT HOFFMAN

For more information call 770-533-6721 or email at Brent@BrentHoffman.com

More property information at www.BrentHoffman.com

Prudential Georgia Realty – 770-536-3007