



**(200 yards from Queen City Parkway)
Gainesville, GA**

ONLY \$1,890/month!

On lockbox for easy showing

[Quick Link for more info](#)

- ◆ 3 offices, or 2 offices and large showroom
- ◆ Full cement, fenced mezzanine
- ◆ Loading dock w/leveler
- ◆ 12' x 16' drive-in door
- ◆ 17-20' ceilings
- ◆ Computer wired
- ◆ His/Her restrooms
- ◆ Ventilation fan
- ◆ Sales counter
- ◆ Great visibility on Ridge Rd. near new RACETRAC
- ◆ 3-phase electric



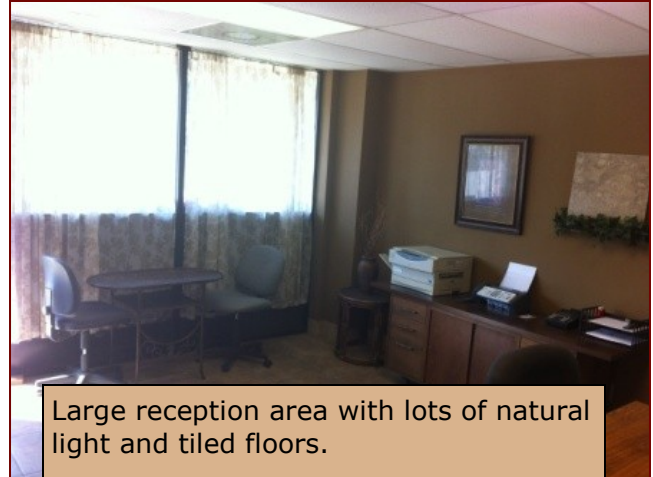


Prudential Georgia Realty **BrentHoffman.com**

"When You Want It Sold"



Large tiled and computer-wired offices.



Large reception area with lots of natural light and tiled floors.



Showroom, or room for additional office build out.



More than 3800 sf of warehouse w/17-20 ft. ceilings.



Approx. 1000 sf of fully fenced mezzanine.



Clean with many extras like 3-phase power.

All this, plus a meticulous Landlord to make your business look good!



For more information call Brent at 770.533.6721,
or e-mail Brent@BrentHoffman.com.
More property information at www.BrentHoffman.com
Prudential Georgia Realty—770.536.3007

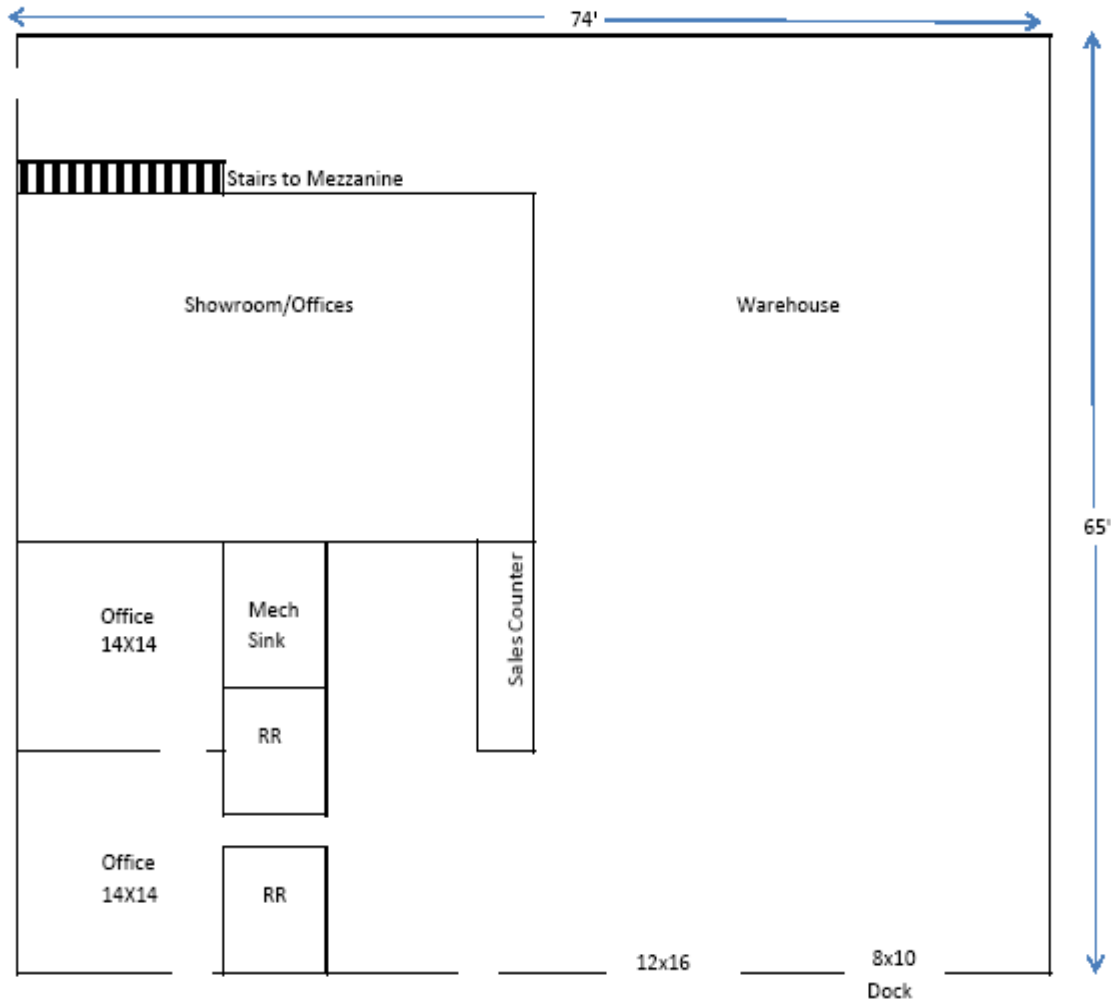


Prudential Georgia Realty

BrentHoffman.com

"When You Want It Sold"

1116 AIRPORT STREET—FLOOR PLAN (not drawn to scale)



DIRECTIONS: I-985 to exit 22, west 1/2 mile to Airport Rd., right to HFC, left to get to the front entrance.



For more information call Brent at 770.533.6721,
or e-mail Brent@BrentHoffman.com.
More property information at www.BrentHoffman.com
Prudential Georgia Realty—770.536.3007