



BERKSHIRE HATHAWAY
HomeServices
Georgia Properties

COMMERCIAL DIVISION

FOR SALE
2 Industrial lots
Great Visibility

Mountain View Industrial Park, Lula GA



Highway 365—North Hall—Lula

Hot spot for industrial-retail and residential activity in Hall County

26,000 + daily traffic count (2016 GDOT)

Marketed By:

Brent Hoffman

Berkshire Hathaway Home Services GA Properties
500 Jesse Jewell Pkwy., SE Suite 300
Gainesville, GA 30501
Direct- 770-533-6721
Office – 770-536-3007
Brent@BrentHoffman
www.BrentHoffman.com





BERKSHIRE HATHAWAY
HomeServices
Georgia Properties

COMMERCIAL DIVISION

Property Information

Lot #2 - 2.76 ac \$119,000

Lot #3 - 2.69 ac \$119,000



5241 & 5261 Mountain Center Plaza

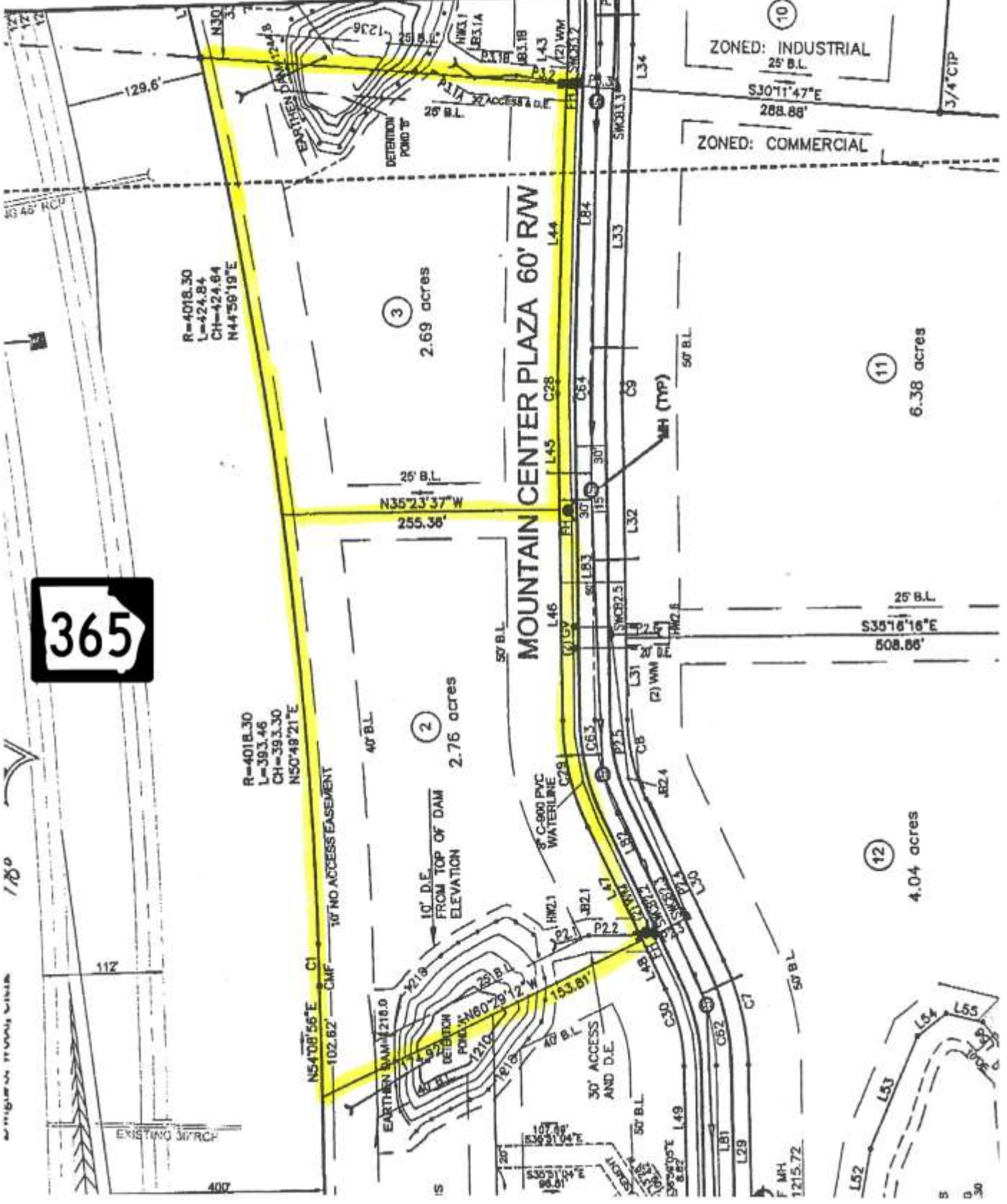
- ◆ **Zoned Light Industrial**
- ◆ **Sewer / water— Protective Covenants**
- ◆ **2 entrances / median cut**
- ◆ **800+/- road frontage**
- ◆ **Detention Pond**
- ◆ **Survey & Topo**

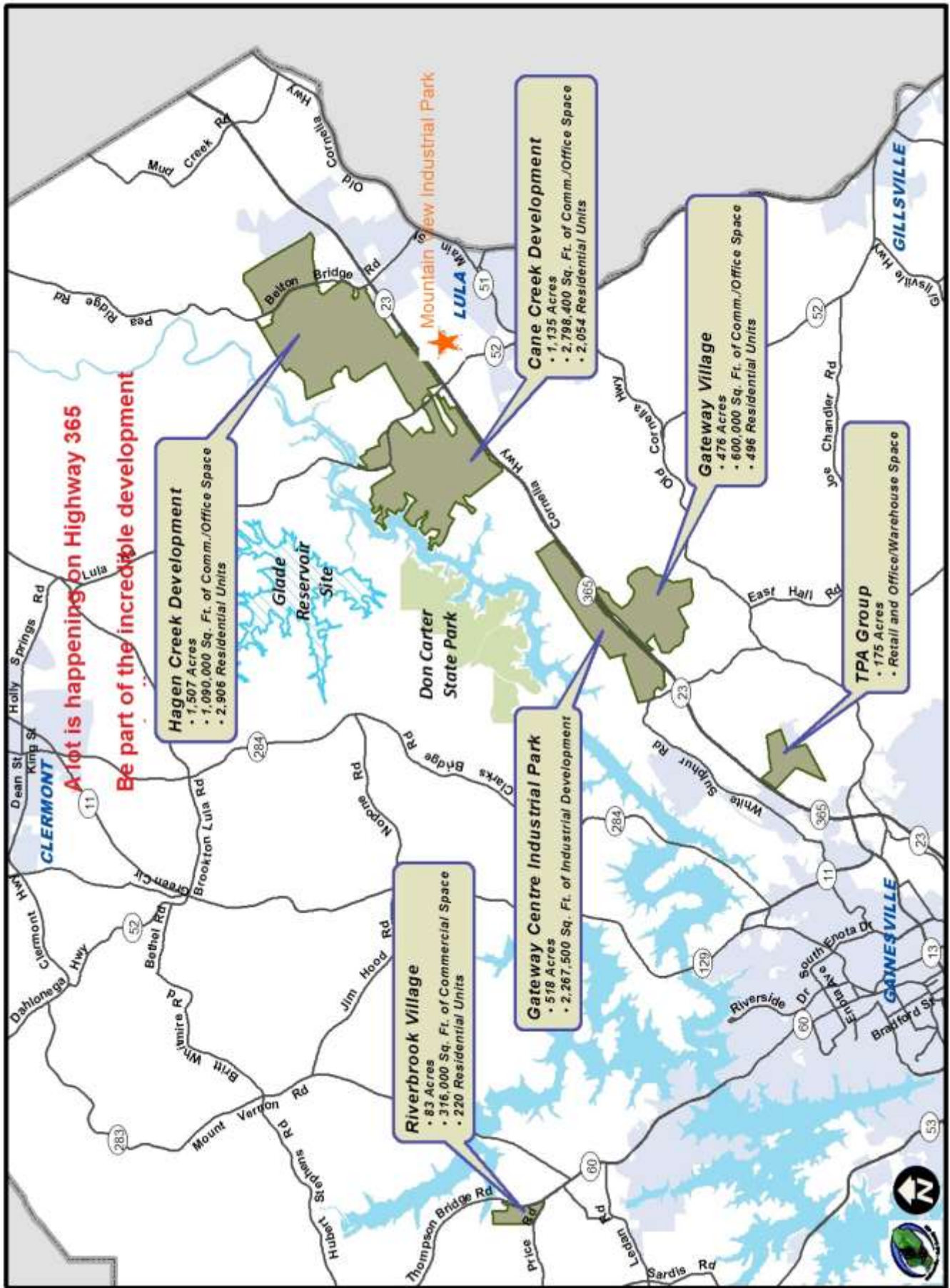
More info and video at: <http://www.brenthoffman.com/listings/I0258.html>

MOUNTAIN VIEW COMMERCIAL P...

Cornerstone Planning Co.

FINAL PLAT FOR:







BERKSHIRE HATHAWAY
HomeServices
Georgia Properties

COMMERCIAL DIVISION

Location Map

Office/Retail Development Site

Gainesville, GA



Convenient to the Atlanta market & Northeast Georgia.

North on I-85 to N on I-985. After exit 24 road turns into Highway 365.

Proceed 10.26 miles and turn right on Mountain View Parkway. Lots are on the left.