



STATE ROUTE 365  
 GA HWY 23  
 VARIABLE R/W

Hall County Georgia Clerk Superior Court  
 Filed in office under  
 2006-7-27-28-29-30-31-32-33-34-35-36-37-38-39-40-41-42-43-44-45-46-47-48-49-50-51-52-53-54-55-56-57-58-59-60-61-62-63-64-65-66-67-68-69-70-71-72-73-74-75-76-77-78-79-80-81-82-83-84-85-86-87-88-89-90-91-92-93-94-95-96-97-98-99-100  
 Book 55 Page 1177  
 Dwyers, Wood Creek

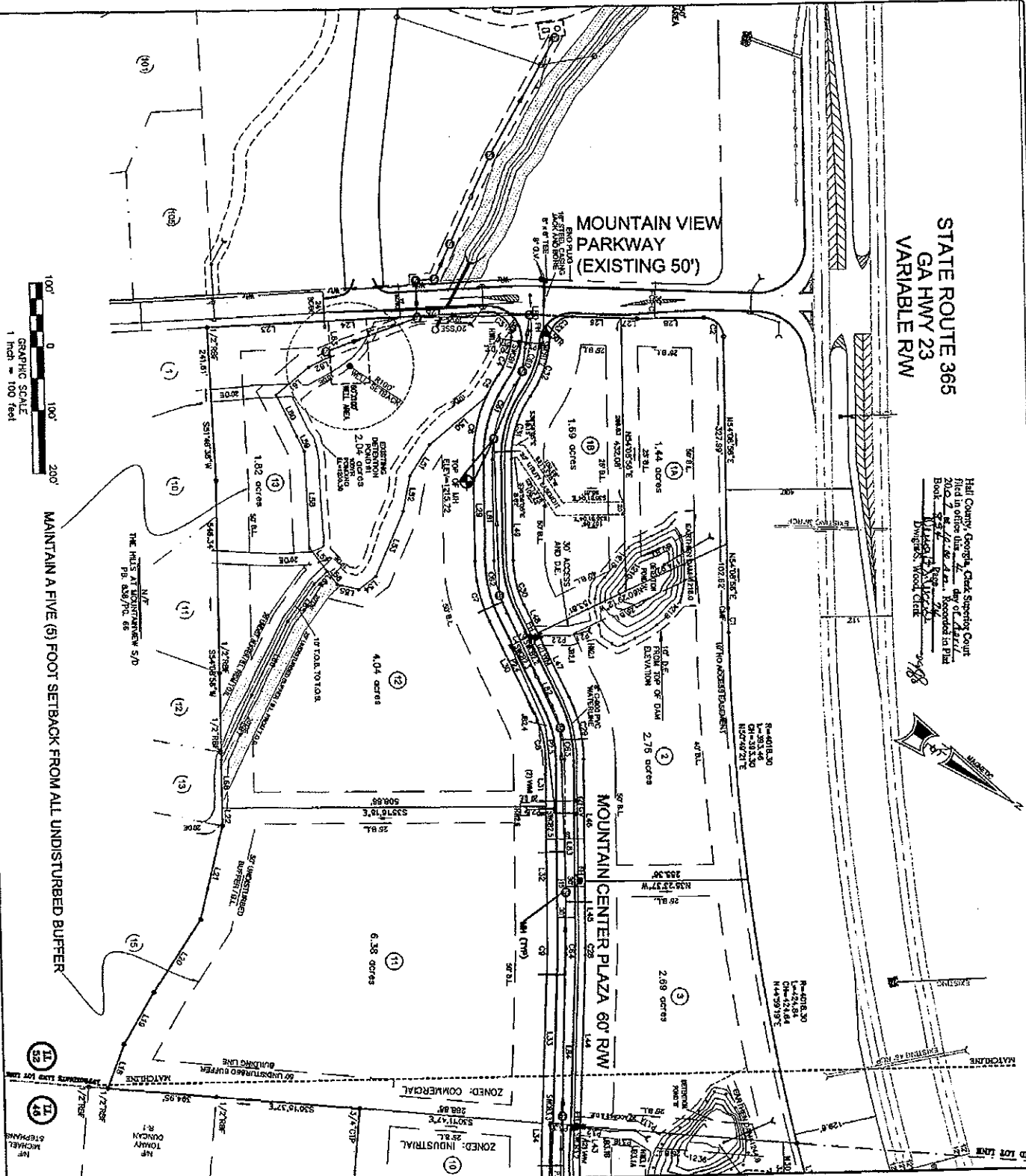


MOUNTAIN VIEW  
 PARKWAY  
 (EXISTING 50')

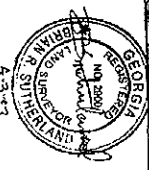


GRAPHIC SCALE  
 1 inch = 100 feet

MAINTAIN A FIVE (5) FOOT SETBACK FROM ALL UNDISTURBED BUFFER



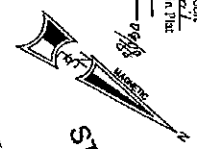
**Northwoods**  
 Surveying &  
 Engineering, Inc.  
 755 South Crosslane Rd  
 Morrow, Georgia 30056  
 Phone: (404) 625-4219  
 Fax: (770) 967-2089



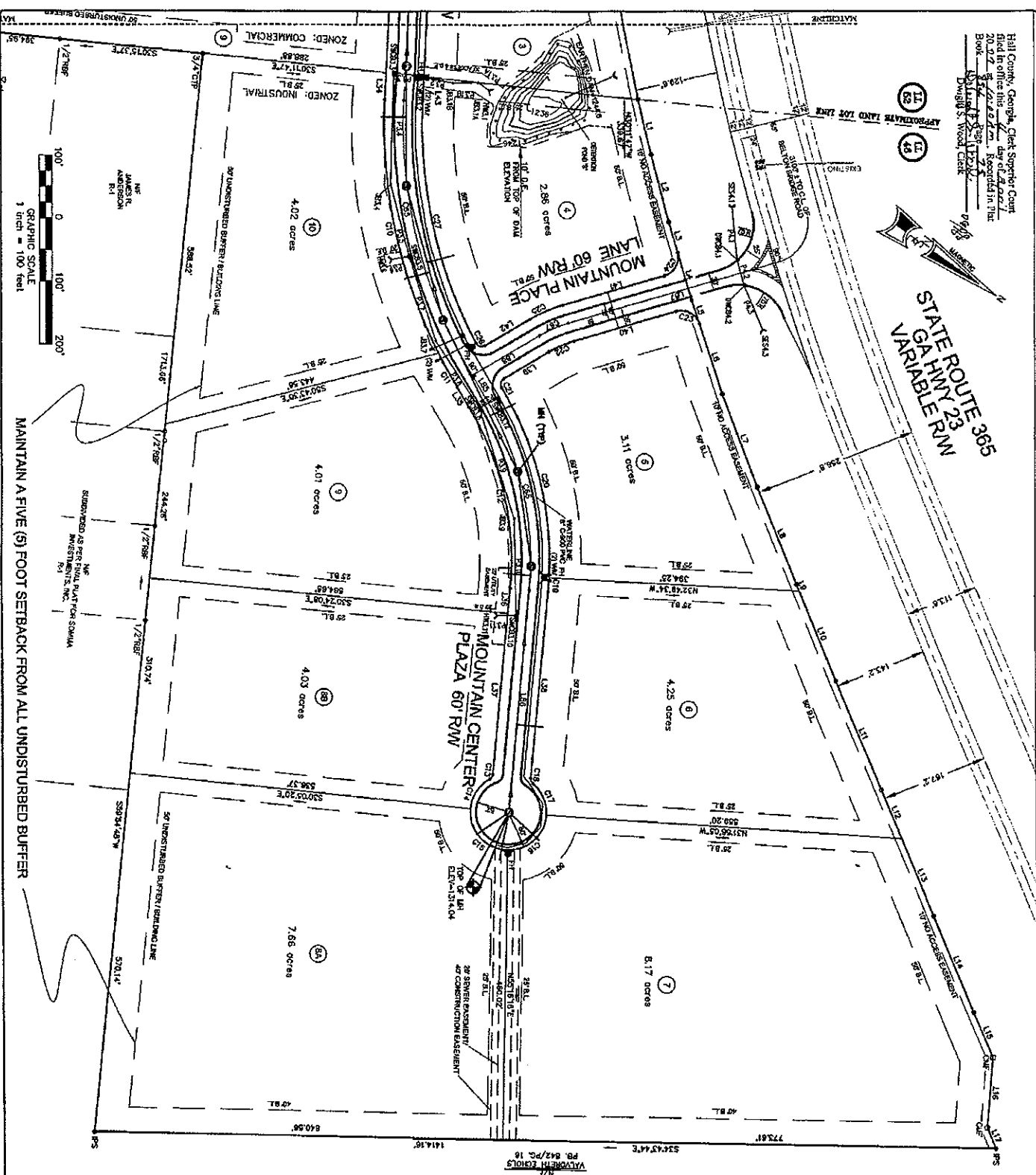
**Cornerstone Planning Co.**  
 ■ P.O. BOX 1140 ■ DANIELSVILLE, GEORGIA 30633  
 ■ FAX: 706-795-0015 ■ OFFICE: 706-795-0011  
 ■ LAND AND DEVELOPMENT PLANNING

FINAL PLAT FOR:		
<b>MOUNTAIN VIEW COMMERCIAL PARK</b>		
Date: 03/14/07	Land Lot: 46 & 52	District: 9th
City of Lula	County: Hall County	Scale: 1"=100'
Project: 06-531	Drawn By: RWB	
ACAD FILE: 06-531 final plat		Sheet No. 2 of 3

Hall County, Georgia, Clerk Superior Court  
 filed in office this 27th day of October 2007  
 Book 142-28-112-112-1  
 Page 112-28-112-112-1  
 Darius S. Wood, Clerk



STATE ROUTE 365  
 GA. HWY 23  
 VARIABLE RM



**Northwoods**  
 Surveying &  
 Engineering, Inc.  
 765 South Crosslano Rd.  
 Monroe, Georgia 30656  
 Phone: (404) 925-4218  
 Fax: (770) 967-2983

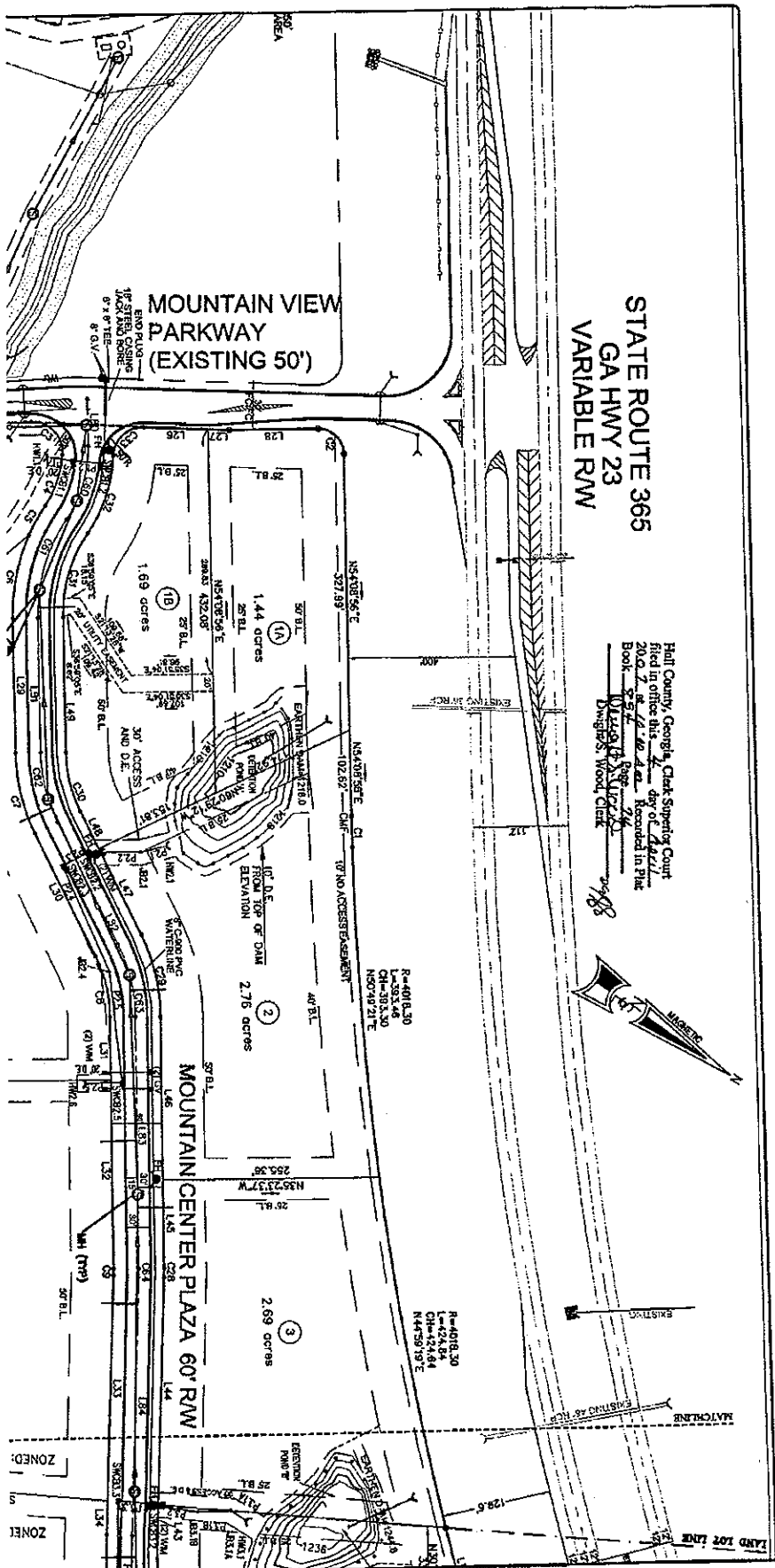


**Cornerstone Planning Co.**  
 ■ P.O. BOX 1140 ■ DANIELSVILLE, GEORGIA 30633  
 ■ FAX: 706-795-0015 ■ OFFICE: 706-795-0011  
 ■ LAND AND DEVELOPMENT PLANNING

FINAL PLAT FOR:  
**MOUNTAIN VIEW  
 COMMERCIAL PARK**  
 Date: 03/14/07 Land Lot: 46 & 52 District: 9th  
 City of Lula County: Hall County Scale: 1"=100'  
 Project: 06-531 Drawn By: RWB

Sheet No.  
 3 OF 3

ACAD FILE: 06-531 final plat



STATE ROUTE 365  
GA HWY 23  
VARIABLE R/W

Hall County, Georgia, Clerk Superior Court  
Filed in office this 24th day of July  
2007 at 11:42 A.M. by Clerk of Court  
Book 357 Page 1000  
014918-1-1  
Dwight Wood, Clerk



FINAL PLAT FOR:  
**MOUNTAIN VIEW  
COMMERCIAL PARK**

Date: 03/14/07 Land Lot: 46 & 52 District: 9th  
City of Lula County: Hall County Scale: 1"=100'

Sheet No.  
2 OF 3

**Stone Planning Co.**  
OX 1140 ■ DANIELSVILLE, GEORGIA 30633  
-795-0015 ■ OFFICE: 706-795-0011  
ND AND DEVELOPMENT PLANNING