

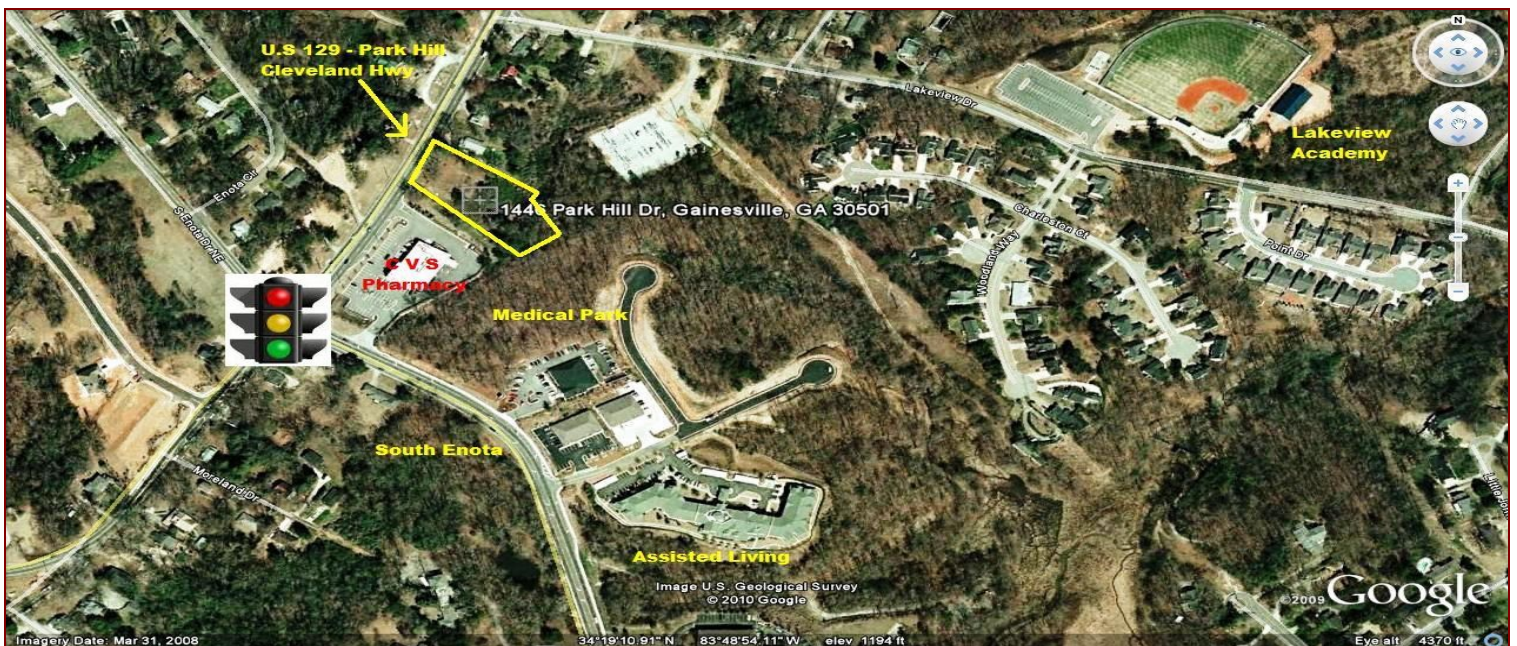


BERKSHIRE HATHAWAY | Georgia Properties
Commercial Division

1.29 acre Super visible lot next to CVS!

U.S. Highway 129/Cleveland Highway
1446 Park Hill Drive
Gainesville, GA 30501

REDUCED TO \$249,000!!



- ◆ Just .4 miles from Hospital and .3 miles from Food Lion and large retail / medical center.
- ◆ 2013 Traffic Count=16,650
- ◆ Major Lighted Intersection
- ◆ **Concept plan attached** for 12,000 s.f. Building w/39 Parking Spaces

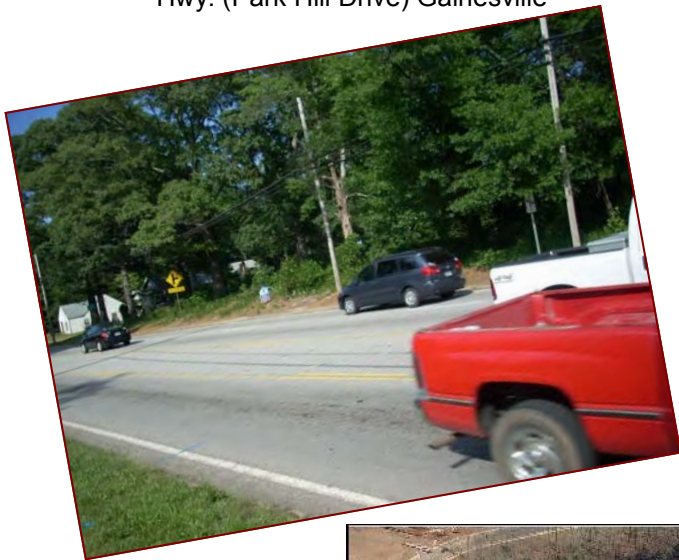
More info and video at www.BrentHoffman.com
BERKSHIRE HATHAWAY | Georgia Properties 770-533-6721



1.29 acre lot next to CVS Drug Store on Cleveland Hwy. (Park Hill Drive) Gainesville



Nice Level Frontage



High Traffic Count



Driveway into Lot with Perfect Slight Drop in the Back for Basement or Parking



