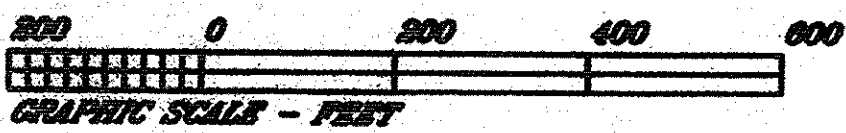
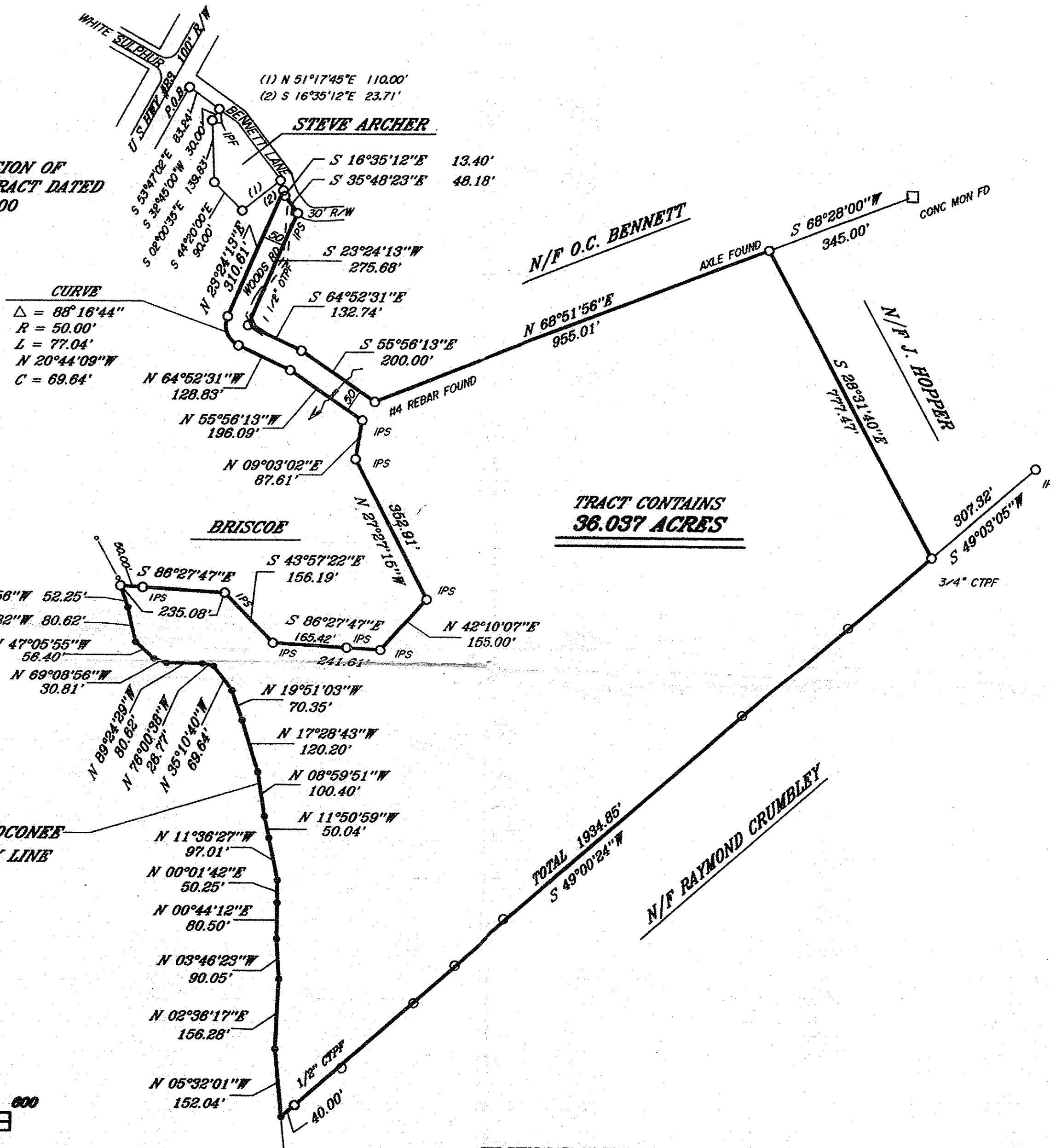


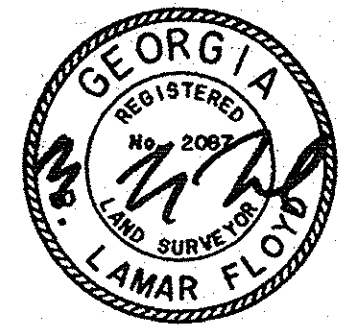
**LEGEND**

- IPS --- 1/2" REBAR SET
- IPF --- 1/2" REBAR FOUND
- N/F --- NOW OR FORMERLY
- CTPF --- CRIMPED TOP FOUND
- OTPF --- OPEN TOP FOUND
- R/W --- RIGHT OF WAY

NOTE: SEE REVISION OF ARCHER TRACT DATED JAN 29, 2000



Prepared By:  
**Cross, Floyd & Kyle, Inc.**  
 Engineers \*\*\* Surveyors  
 P.O. Box 5186 (770)536-0339  
 Gainesville, GA. 30504



THE FIELD DATA ON WHICH THIS PLAT OR MAP IS BASED HAS A CLOSURE PRECISION OF ONE FOOT IN 10,000+ FEET AND AN ANGULAR ERROR OF 0°00'03" PER ANGLE POINT, AND WAS ADJUSTED USING THE COMPASS RULE. THIS MAP OR PLAT HAS BEEN CALCULATED FOR CLOSURE AND IS FOUND TO BE ACCURATE TO WITHIN ONE FOOT IN 100,000+ FEET.

THIS PLAT WAS PREPARED IN CONFORMITY WITH THE MINIMUM STANDARDS AND REQUIREMENTS OF THE LAW, GEORGIA LAWS 1978 AND IS SUITABLE FOR RECORDING.

*B. L. F.*  
 B. LAMAR FLOYD GA. REG. SURVEYOR No. 2087

SURVEY FOR:  
**Bobo Briscoe**  
 LOCATED IN HALL COUNTY, GEORGIA  
 DATE: OCT. 27, 1997 --- SCALE: 1" = 200'