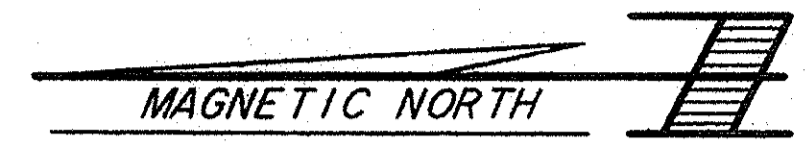


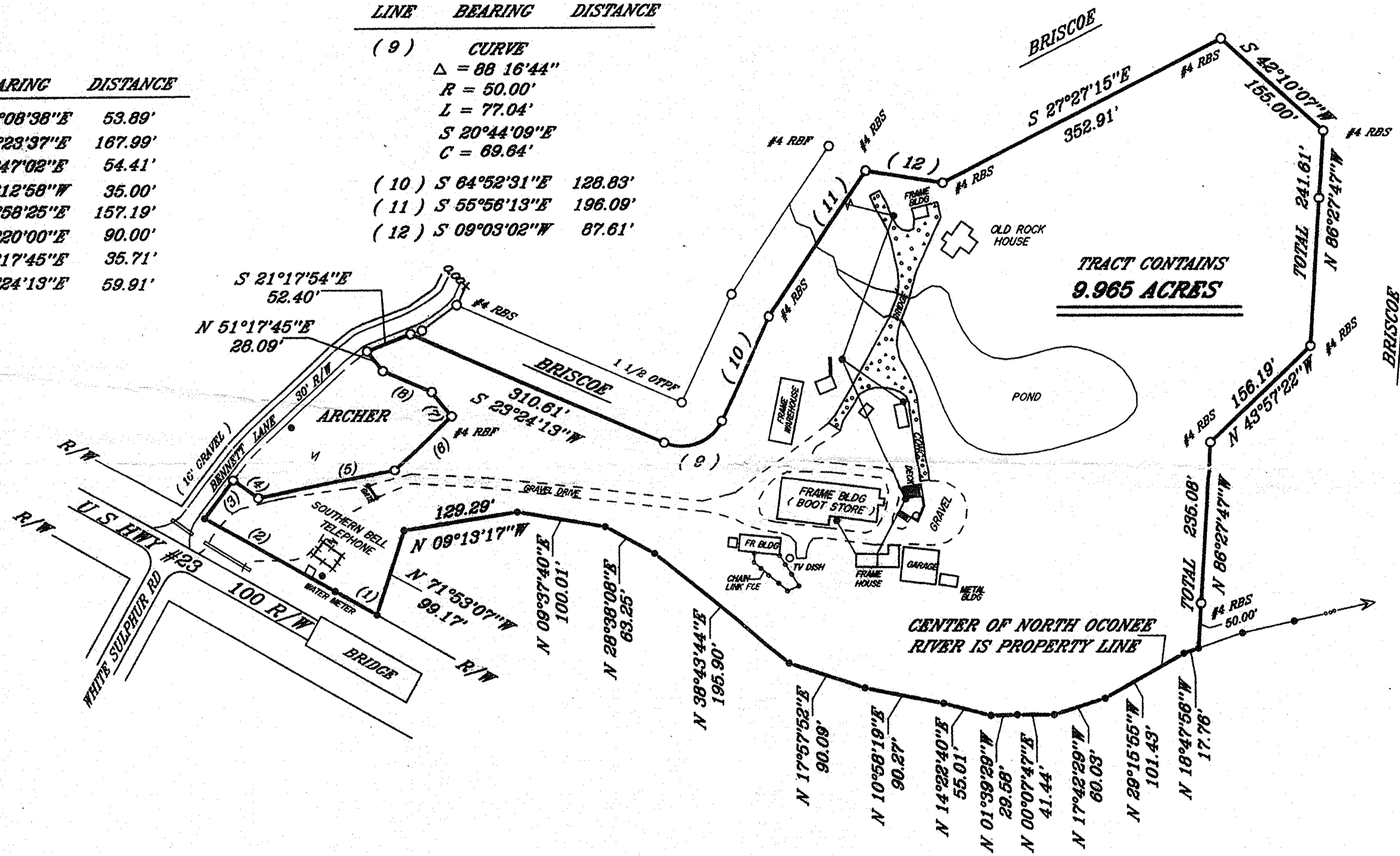
LEGEND

- #4 RBS ----- 1/2 INCH REBAR SET
- #4 RBF ----- 1/2 INCH REBAR FOUND

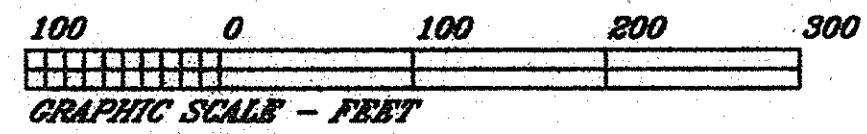
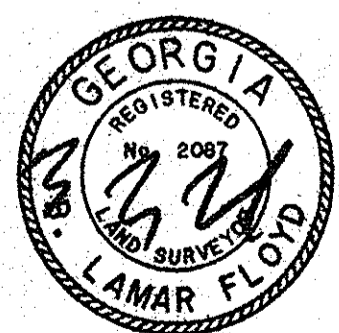


LINE	BEARING	DISTANCE
(1)	N 29°08'38"E	53.89'
(2)	N 29°23'37"E	167.99'
(3)	S 53°47'02"E	54.41'
(4)	S 36°12'58"W	35.00'
(5)	S 11°56'25"E	157.19'
(6)	S 44°20'00"E	90.00'
(7)	N 51°17'45"E	35.71'
(8)	N 23°24'13"E	59.91'

LINE	BEARING	DISTANCE
(9)	CURVE	
	Δ = 88 16'44"	
	R = 50.00'	
	L = 77.04'	
	S 20°44'09"E	
	C = 69.64'	
(10)	S 64°52'31"E	128.83'
(11)	S 55°56'13"E	196.09'
(12)	S 09°03'02"W	87.61'



TRACT CONTAINS  
**9.965 ACRES**



THE FIELD DATA ON WHICH THIS PLAT OR MAP IS BASED HAS A CLOSURE PRECISION OF ONE FOOT IN 10,000+ FEET AND AN ANGULAR ERROR OF 0°00'03" PER ANGLE POINT, AND WAS ADJUSTED USING THE COMPASS RULE. THIS MAP OR PLAT HAS BEEN CALCULATED FOR CLOSURE AND IS FOUND TO BE ACCURATE TO WITHIN ONE FOOT IN 100,000+ FEET.

THIS PLAT WAS PREPARED IN CONFORMITY WITH THE MINIMUM STANDARDS AND REQUIREMENTS OF THE LAW, GEORGIA LAWS 1978 AND IS SUITABLE FOR RECORDING.

B. LAMAR FLOYD  
DATE: JAN 27, 2000  
CA. REG. SURVEYOR No. 2087

SURVEY FOR:  
**Bobo Briscoe**  
LOCATED IN: HALL COUNTY, GEORGIA  
DATE: JAN 27, 2000 — SCALE: 1" = 100'

Prepared By:  
**F** Floyd & Associates, Inc.  
Land Surveyors  
P.O. Box 1119  
Oakwood, GA. 30566  
Phone (770) 531-0900