



3.18 acres in protected industrial park

JUST REDUCED \$130,000

ONLY \$40,880 per acre



2335 Centennial Circle, Gainesville, 30504

- ◆ All utilities—Sewer, water, gas
- ◆ Only Hall County taxes—(no city taxes)
- ◆ Convenient Gainesville location on cul-de-sac
- ◆ Protected Industrial Park

For additional information: <http://www.brenthoffman.com/listings/l0313.html>

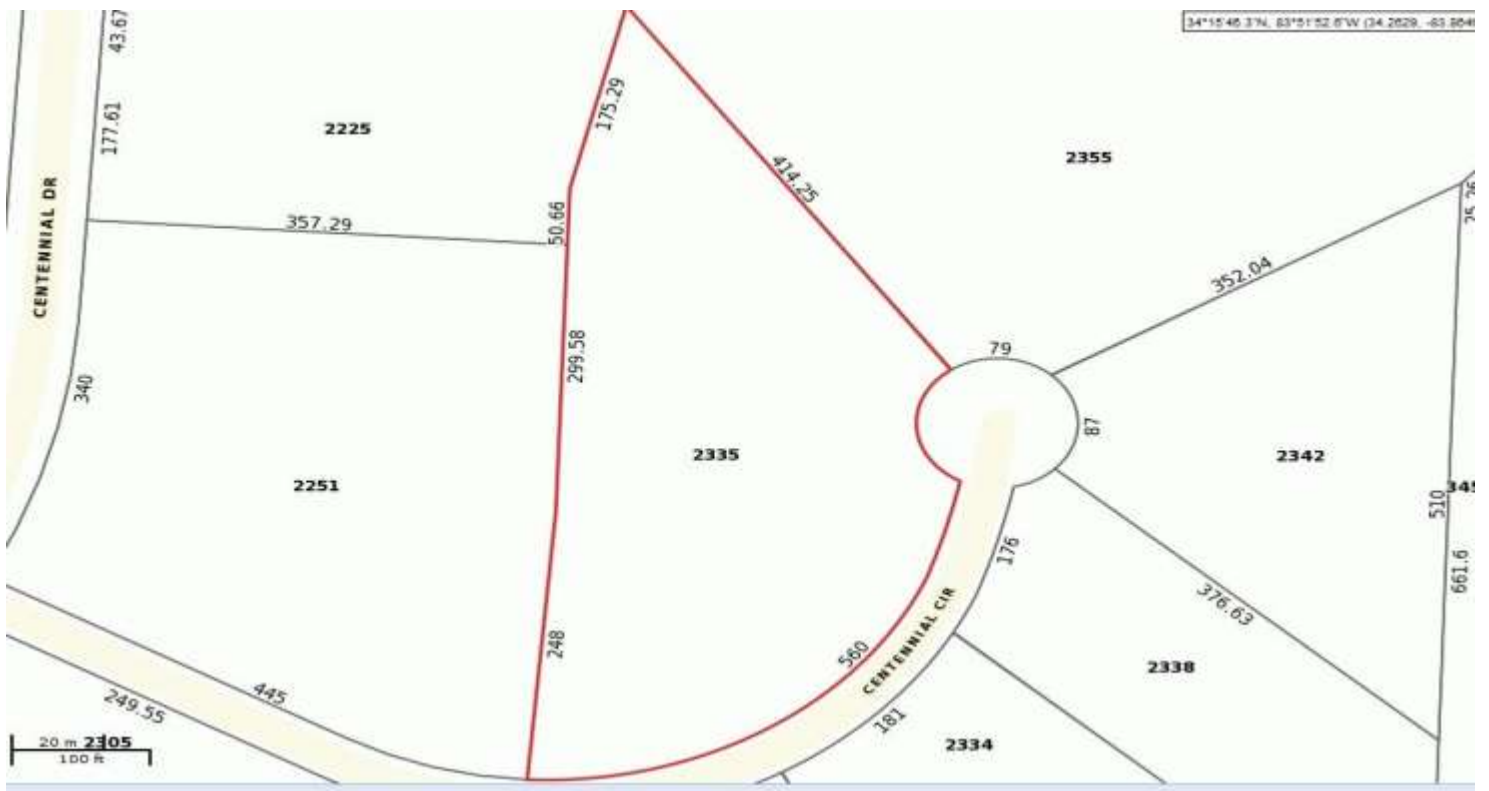
500 Jesse Jewell Pkwy., S.E. Suite 300
Gainesville, GA 30501
770-533-6721 (Direct) 770-536-3007 (Office)
Brent@BrentHoffman.com www.BrentHoffman.com



Convenient in town location in covenant protected industrial park

Directions: Browns Bridge Rd to Memorial Park Dr. to Centennial Dr. to Centennial Cir





Property dimensions—560 feet of road frontage





Topo

Utility lines

