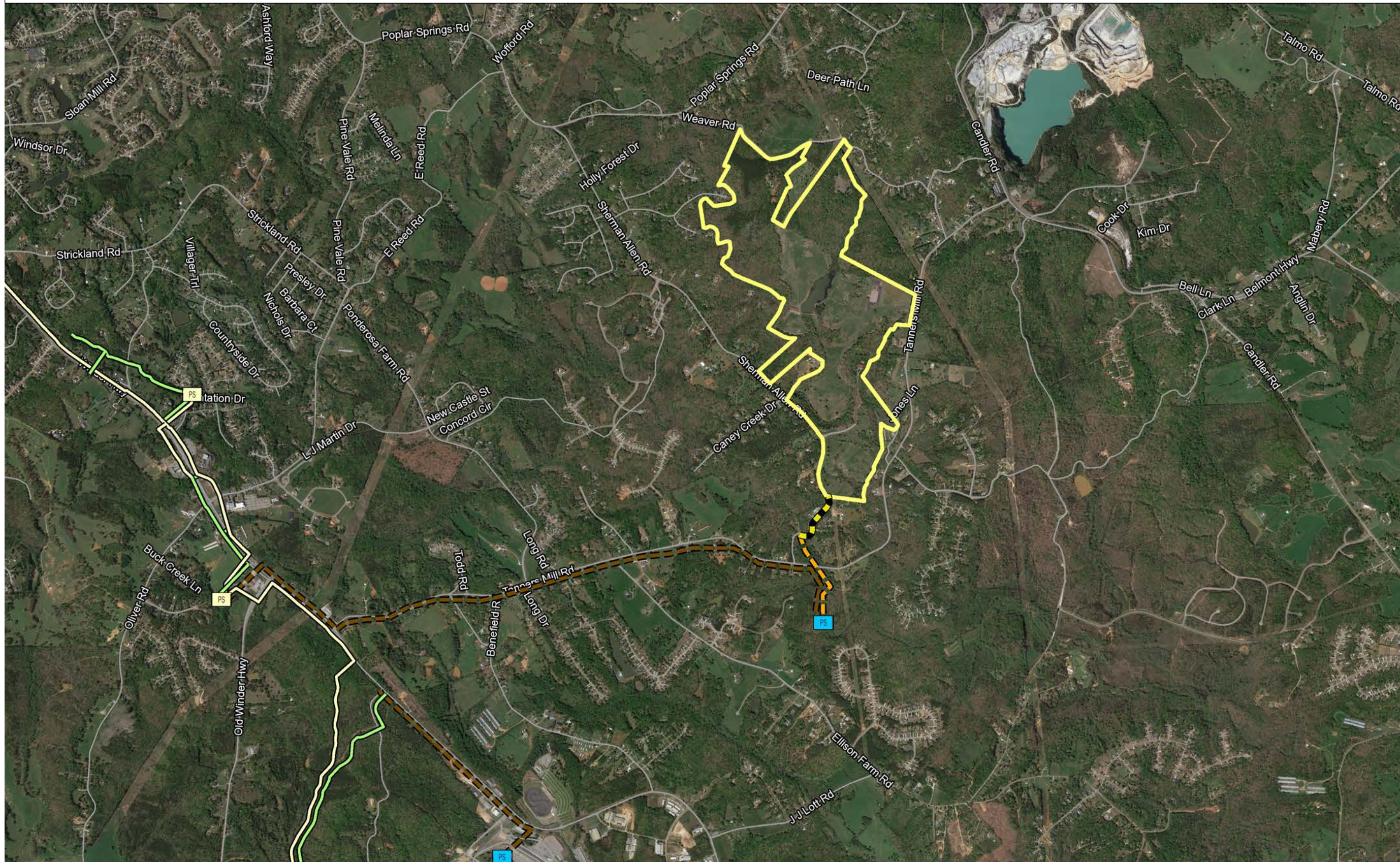


# Hall County Sewer Master Plan



**Legend**

**Pump Stations**

- Existing Pump Station (Yellow square with PS)
- Proposed Pump Station (Blue square with PS)

**Sewer Lines**

- Existing Forcemain (Solid black line)
- Existing Gravity Sewer (Solid green line)
- Proposed County Built Forcemain (Dashed black line)
- Proposed County Built Gravity Sewer (Dashed green line)
- Proposed Developer Built Forcemain (Dashed yellow line)
- Proposed Developer Built Gravity Sewer (Dashed black line)

Robson Parcel (Yellow outline)

Roads (Thin grey line)

1: 33,133

1.0 0 0.52 1.0 Miles

WGS\_1984\_Web\_Mercator\_Auxiliary\_Sphere  
 © Rochester and Associates Inc. GIS Services

This map is a user generated static output from an Internet mapping site and is for reference only. Data layers that appear on this map may or may not be accurate, current, or otherwise reliable.

THIS MAP IS INTENDED FOR VISUALIZATION PURPOSES ONLY.

**Notes**  
 Tanners Mill Rd. Gainesville, GA, 30507